

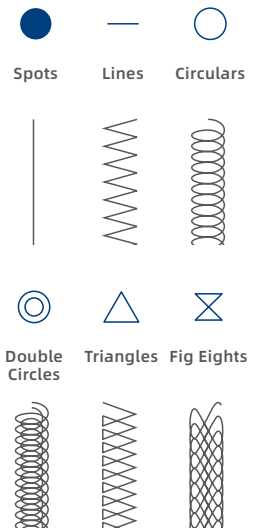


SMART NW Series

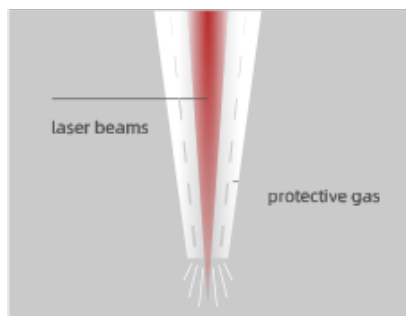
Handheld Laser Welding Machine



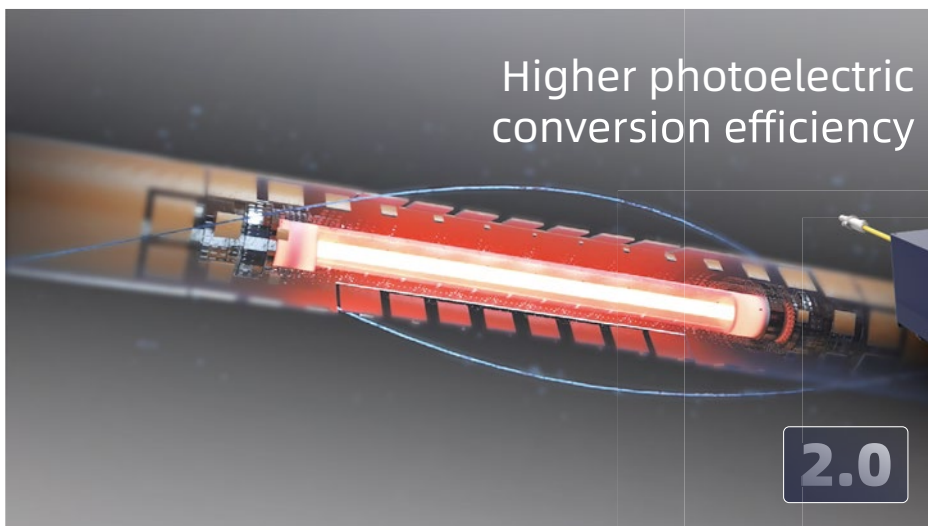
Multiple spot modes can be switched freely



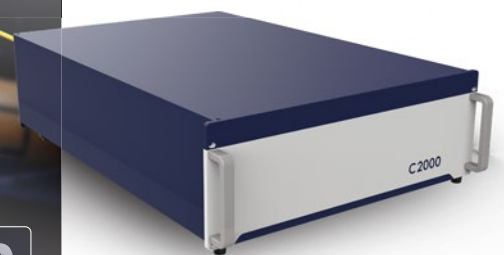
Circulating water circuit design
Rapid cooling of the gun body



Coaxial blowing mode of protective gas
It is no longer limited to linear welding



Second generation optical fiber transmission system
Better and more stable beam quality





A powerful operating system

Simple and clear operation interface,
easy to master and easy to adjust



Parameter

MODEL	SMART - NW	
Laser type	Fiber	
Wavelength	1080nm	
Power	1KW/1.5KW/2KW	
Frequency	20-5KHz	
Output focal length	120mm	
Cooling method	Water cooling	
Fiber length	5M/10M/15M	
Port	1 way gas	
Power consumption	≤6KW	
Air pressure requirement	4-6Bar (Select nitrogen, argon or compressed air according to process requirements.)	
Electricity demand	1KW/1.5KW-AC220V/50/60Hz	• 2KW-AC380V/50/60Hz

Industry Applications





Via Lega Lombarda 30 - 24040 Bonate Sopra BG Italy
tel. +39 035 494 33 54 - fax +39 035 494 29 25
commerciale@nworld.it - www.nworld.it